

'Mystery cottage' is long gone — but not forgotten



TRIP DOWN MEMORY LANE: Dorothy Wilding (centre) with Carol Daniel, left, and Aileen Aitken outside Woodbine Cottage in June 1965 on the day of Mobberley's annual Rose Queen Festival. ABOVE: The spot today — home to Eden's garage

News from the Past

WOODBINE Cottage was by all accounts a real family home. Home, that is, to the Wildings of Mobberley. And although it was bulldozed to make way for a garage years ago, the last occupants still live within walking distance. "We are all still in Mobberley and are quite close together," said Dorothy Butler, who contacted the *Knutsford Guardian* after resident Harry Beggs' appeal for information about Woodbine Cottage last week.

He said one of his relations, Sarah Bolton, had stayed at the cottage sometime between 1915 and 1920. But he had no idea where it was.

Dorothy — the youngest of Robert and Dorothy Wilding's three children — was born in the cottage. "We mainly lived in a room at the back of the house because the front room was for visitors," said Dorothy, who is now 53 and lives in Edenfield Close. Her brother Clifford also rang the *Knutsford Guardian*.

He said he'd lived in the four-bedroomed cottage in Town Lane, Mobberley, for more than 20 years. It was a good, family home,

Village affair of the heart

by **ANDREW MOORES**

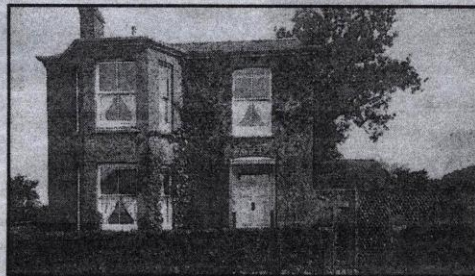
he said, even though they survived without running water and electricity. "We used oil lamps which were quite reliable and we had a water storage tank at

the back, but you could only use that for washing," said Clifford, now 66. When Dorothy and Clifford's mum died in 1971, the children had already left home. Shortly after the house was

bought and knocked down to make way for Eden's garage.

But the memory of it lives on and not just in the Wilding family. Mobberley resident Ken Davies remembered raiding an orchard at the back of the house and Tony Usher told how he loved strolling past the 'impressive' house on his way to school.

DO you have any old tales or photographs of Knutsford? Whatever you've got, we'd love to hear from you. Call us on 01565 751114, pop in and see us in the Council Offices, or write to Miss Matty's Diary, Knutsford Guardian, The Council Offices, Toft Road, Knutsford, Cheshire, WA16 6TA.



THE WAY IT WAS: Woodbine Cottage

15 YEARS AGO

RESIDENTS and allotment holders joined forces in a bid to thwart a 100-house development on prime Knutsford land including part of the 100-year-old Caldwell's Nursery. FOUR members of the Knutsford Scout Group turned from winter camp triumph after completing a tough orienteering course record-breaking time.

25 YEARS AGO

A HOMEMADE explosive device was discovered in a house near a Mobberley farmhouse. SHOPS in Knutsford were surrounded by long queues reminiscent of wartime rationing days as the bakers' display hit bread supplies.

60 YEARS AGO

EVENSONG at Mobberley Parish Church was held for the first time since the outbreak of the Second World War. Until the church was blacked out services had been held in the afternoons. KNUTSFORD Citizens' Advice Bureau was offering advice on Army allowances, loan purchase agreements, education, clothing, food and filling in forms. All were problems created by the war.

Miss Matty's Diary



News from the Past

15 YEARS AGO

RESIDENTS and allotment holders joined forces in a bid to thwart a 100-house development on prime Knutsford land, including part of the 204-year-old Caldwell's Nursery.

FOUR members of the 4th Knutsford Scout Group returned from winter camp in triumph after completing a tough orienteering course in record-breaking time.

25 YEARS AGO

A **HOMEMADE** explosive device was discovered in a hedge near a Mobbereley farmhouse.

SHOPS in Knutsford were surrounded by long queues reminiscent of wartime rationing days as the bakers' dispute hit bread supplies.

60 YEARS AGO

EVENSONG at Mobbereley Parish Church was held for the first time since the outbreak of the Second World War. Until the church was blacked out services had been held in the afternoons.

KNUTSFORD Citizens' Advice Bureau was offering advice on Army allowances, hire purchases, agreements, allowances, clothing, food and help filling in forms. All were problems connected with the war.

SARAH Bolton obviously enjoyed her stay at Woodbine Cottage in Knutsford. Writing to her sister on a postcard sometime between 1915 and 1920, she told her that she could stay in the town for good.

"I am having a rollicking time here," she wrote. "It is a lovely place. They are such nice people, no rush, no crowd."

"This and a pound a week would suit me down to the ground."

But apart from those few words, Sarah's stay in Knutsford remains a mystery to her family.

"We are just curious about where Woodbine Cottage is, if it is still there, and what it looks like now," said Sarah's relation Harry Beggs.

The postcard was unearthed when Harry's grandson James had to do a family history project at Egerton School.

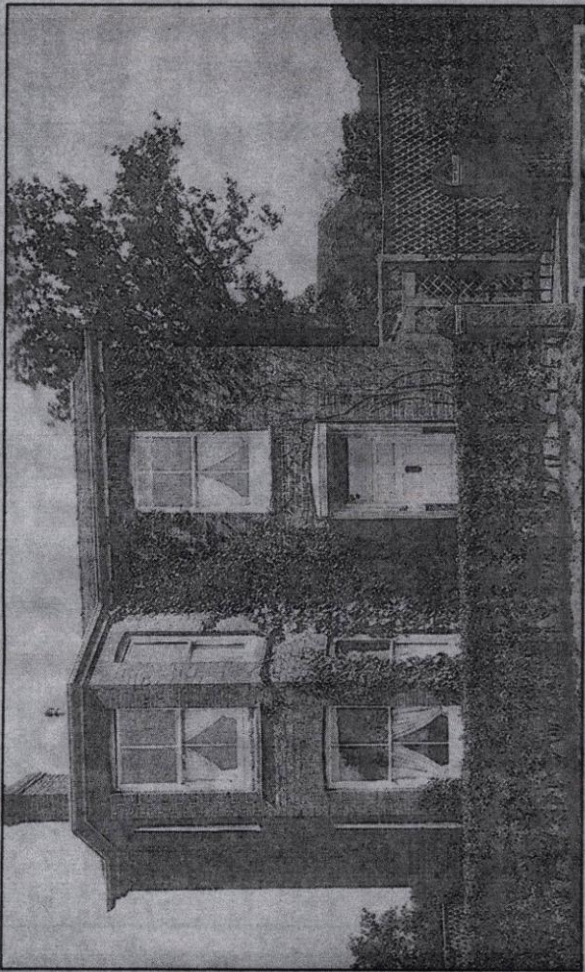
His grandma Joyce dug out an album for the 11-year-old that had been handed down the generations of her family.

The postcard of Woodbine Cottage was one of the many gems among its pages which are filled with photographs and other mementoes.

Sarah, 10, Joe's great-aunt, and her sister's seemed to have regularly corresponded during the week by postcards.

As well as cards from

Mystery cottage that left a lifelong impression



IT'S A MYSTERY: Woodbine Cottage in Knutsford. But where was — or is — it? RIGHT: Lauren Beggs, the year she was Knutsford's Royal May Queen

Picture this postcard?

by GILL FARRINGTON

features notes from Southport and North Wales. But Harry and his wife, who live in Heald Green, are particularly interested in Woodbine Cottage because

Knutsford.

Both their sons live in the town and their granddaughter Lauren, now 16, was the town's Royal May Queen in 1995.

"We've asked our sons where they think the cottage is, or

know," said Harry. "It would be nice to find out more."

If you know where Woodbine Cottage was or still is, please call the *Knutsford* office on 01665 751114.



DO you have any old tales or photographs of Knutsford? Whatever you've got, we'd love to hear from you. Call us on 01665 751114, pop in and see us in the Council Offices, or write to Miss Matty's Diary, Knutsford Guardian, The Council Offices, Toft Road, Knutsford, Cheshire, WA4 2 2 2.